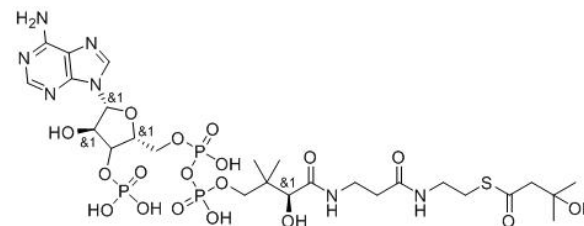
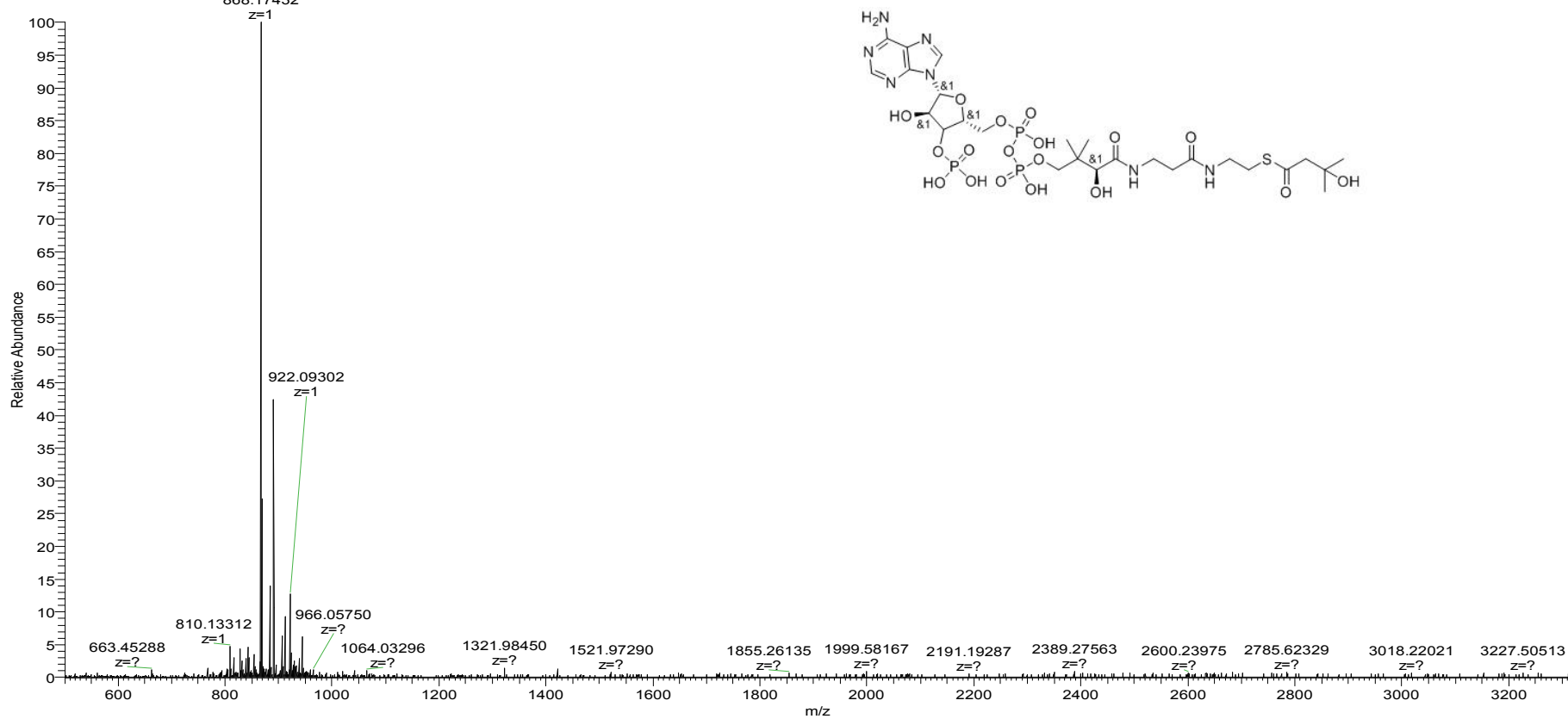
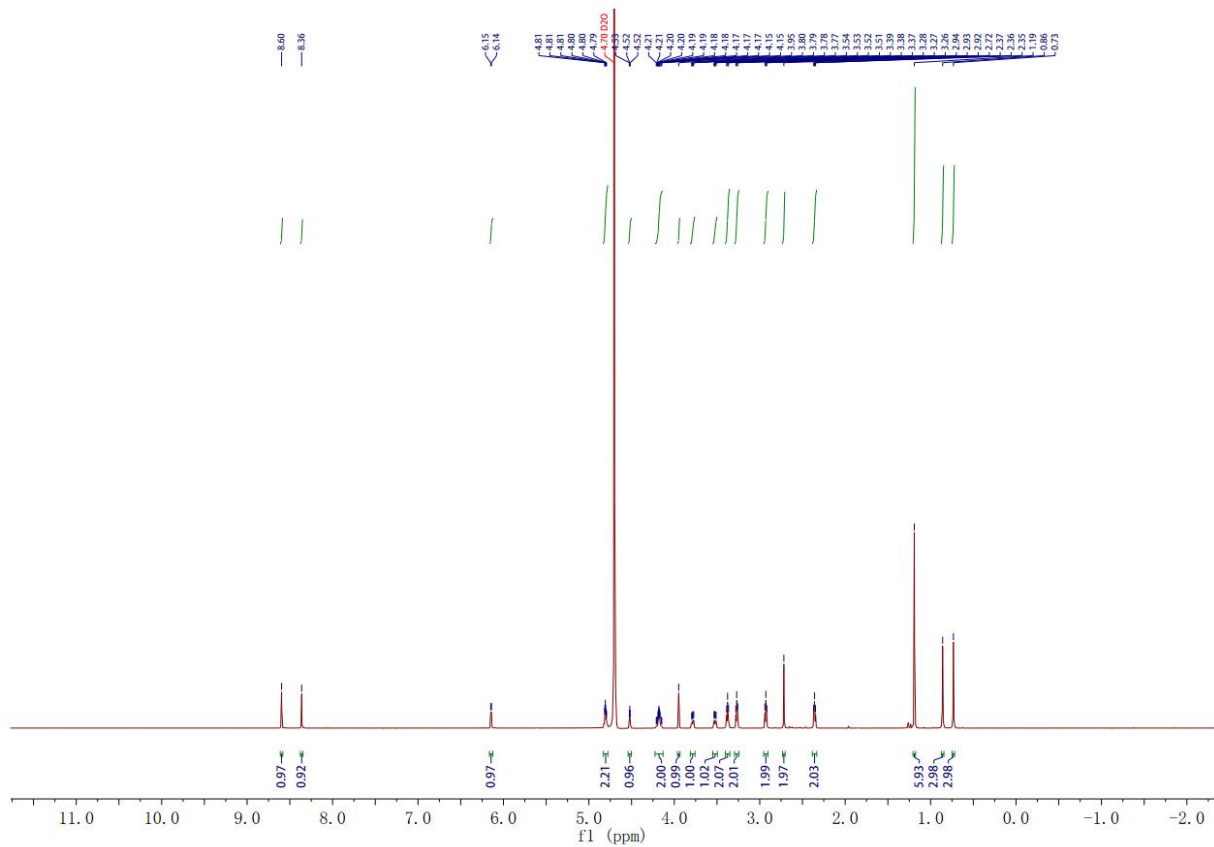


coa-1516-cn-1 #85 RT: 1.08 AV: 1 NL: 1.87E5
T: FTMS + p ESI Full ms [500.0000-5000.3999]
868.17432



[M+H⁺]=868.17432



^1H NMR (600 MHz, Deuterium Oxide) δ 8.60 (s, 1H), 8.36 (s, 1H), 6.14 (d, $J = 5.6$ Hz, 1H), 4.83 – 4.78 (m, 2H), 4.52 (t, $J = 2.8$ Hz, 1H), 4.23 – 4.13 (m, 2H), 3.95 (s, 1H), 3.78 (dd, $J = 9.8, 4.9$ Hz, 1H), 3.52 (dd, $J = 9.8, 4.8$ Hz, 1H), 3.38 (t, $J = 6.6$ Hz, 2H), 3.27 (t, $J = 6.4$ Hz, 2H), 2.93 (t, $J = 6.4$ Hz, 2H), 2.72 (s, 2H), 2.36 (t, $J = 6.6$ Hz, 2H), 1.19 (s, 6H), 0.86 (s, 3H), 0.73 (s, 3H).